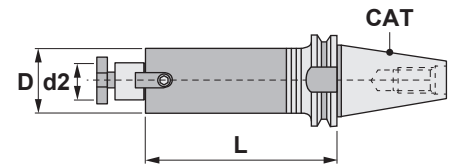
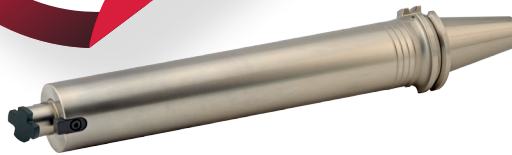
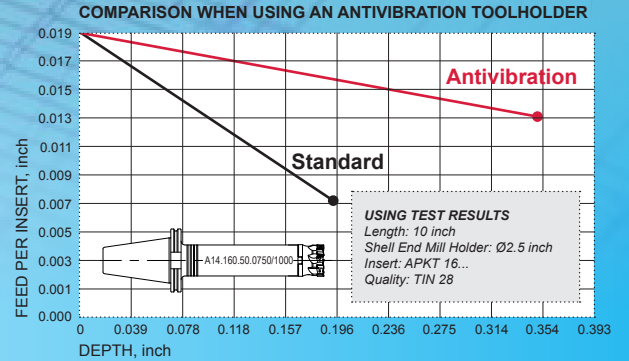


antivibration adaptors

Vibration reduced up to 60% compared to any other conventional shell mill adaptor, as they are manufactured with materials and mechanisms having antivibration properties.



A14.160 Characteristics:

Antivibration shell mill adaptors. CAT 40 / 50

Reference	CAT	D	d2	L	List Price
A14.160.40.0750/0600	40	1.90	0.750	6"	\$275.00
A14.160.40.0750/0800		1.90	0.750	8"	\$460.00
A14.160.40.0750/1000		1.90	0.750	10"	\$478.00
A14.160.40.0750/1200		1.90	0.750	12"	\$494.00
A14.160.40.1000/0600		2.40	1.000	6"	\$275.00
A14.160.40.1000/0800		2.40	1.000	8"	\$460.00
A14.160.40.1000/1000		2.40	1.000	10"	\$478.00
A14.160.40.1000/1200		2.40	1.000	12"	\$494.00
A14.160.50.0750/0600	50	1.90	0.750	6"	\$475.00
A14.160.50.0750/0800		1.90	0.750	8"	\$585.00
A14.160.50.0750/1000		1.90	0.750	10"	\$598.00
A14.160.50.0750/1200		1.90	0.750	12"	\$614.00
A14.160.50.0750/1600		1.90	0.750	16"	\$710.00
A14.160.50.0750/2000		1.90	0.750	20"	\$899.00
A14.160.50.1000/0600		2.40	1.000	6"	\$475.00
A14.160.50.1000/0800		2.40	1.000	8"	\$585.00
A14.160.50.1000/1000		2.40	1.000	10"	\$598.00
A14.160.50.1000/1600		2.40	1.000	16"	\$710.00
A14.160.50.1000/2000		2.40	1.000	20"	\$899.00
A14.160.50.1250/0600		2.90	1.250	6"	\$475.00
A14.160.50.1250/0800		2.90	1.250	8"	\$585.00
A14.160.50.1250/1200		2.90	1.250	12"	\$614.00
A14.160.50.1250/1600		2.90	1.250	16"	\$710.00
A14.160.50.1250/2000		2.90	1.250	20"	\$899.00

Represented By:



Products are available through your select CANELA distributor